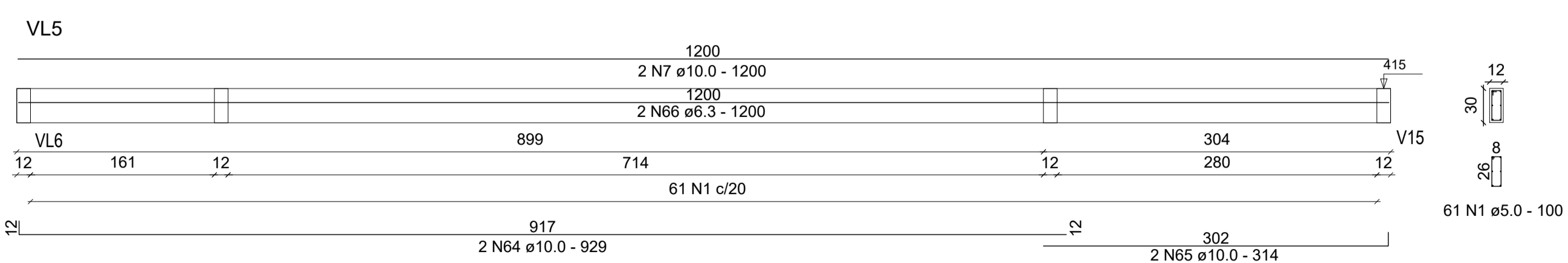
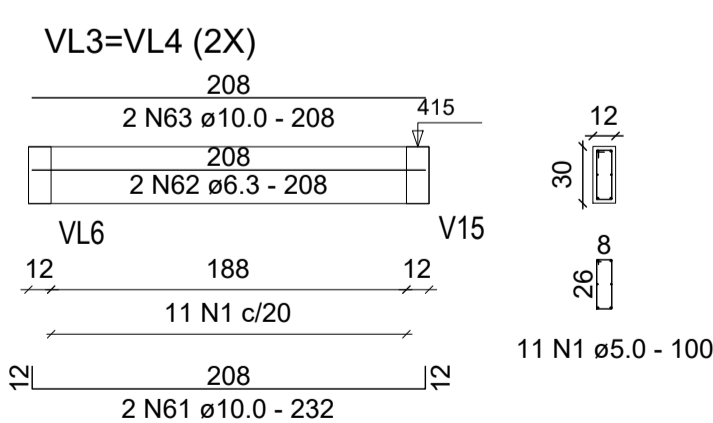
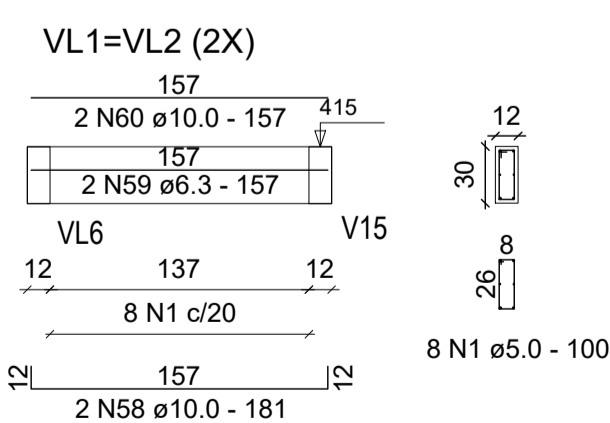
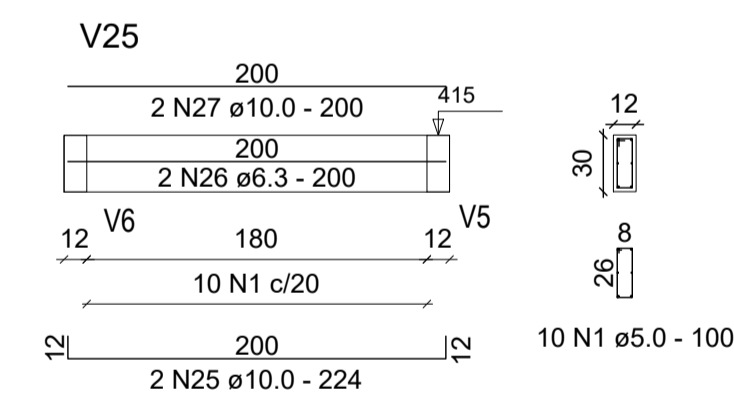
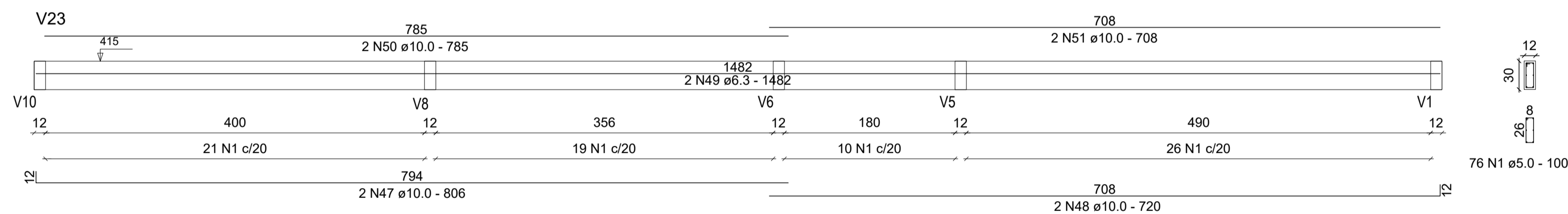
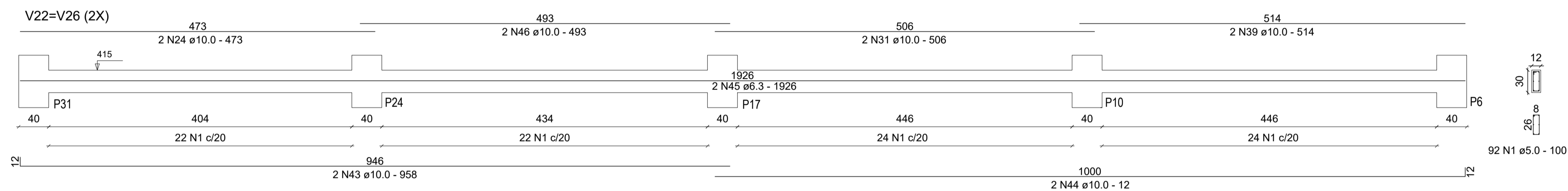
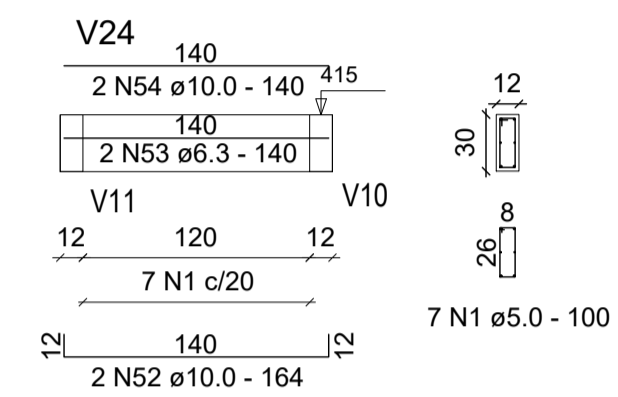
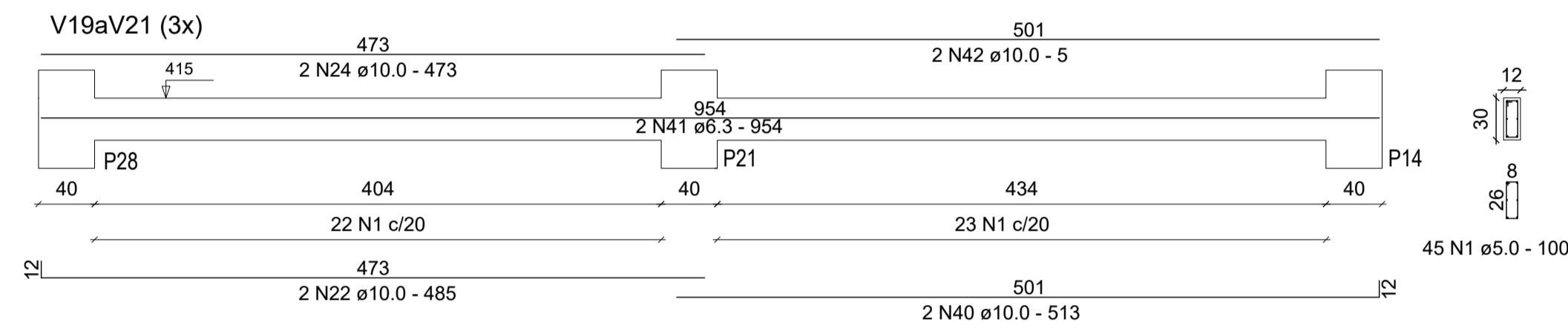
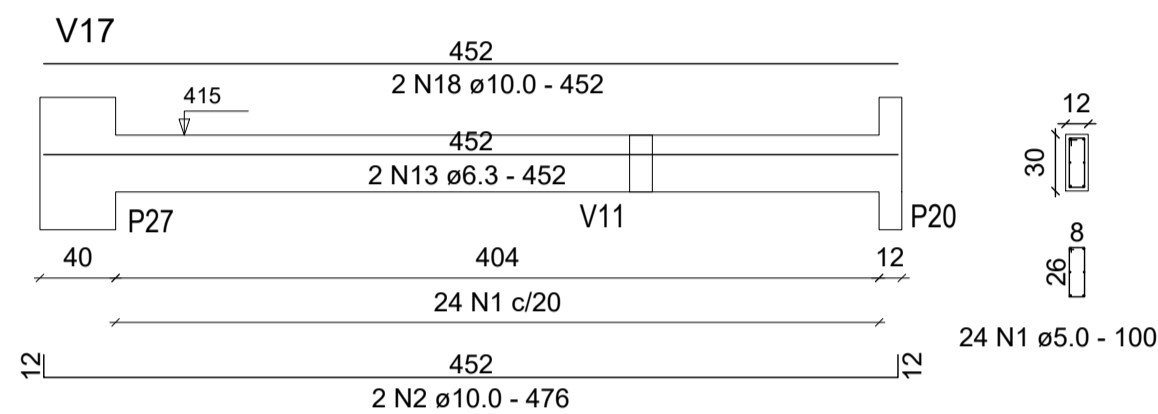
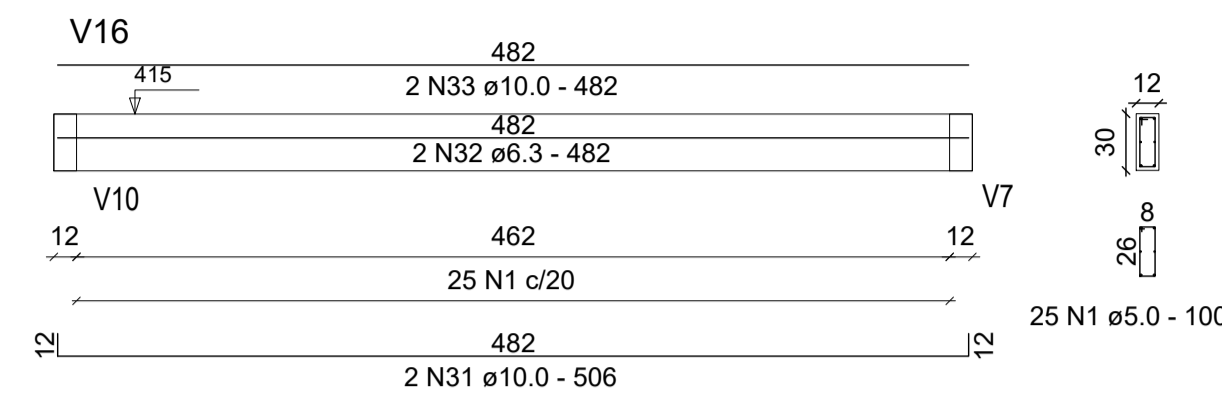
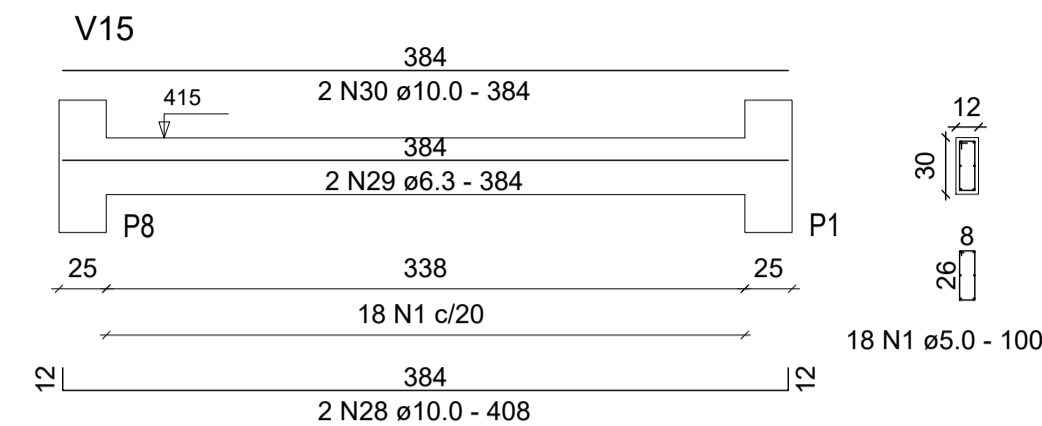
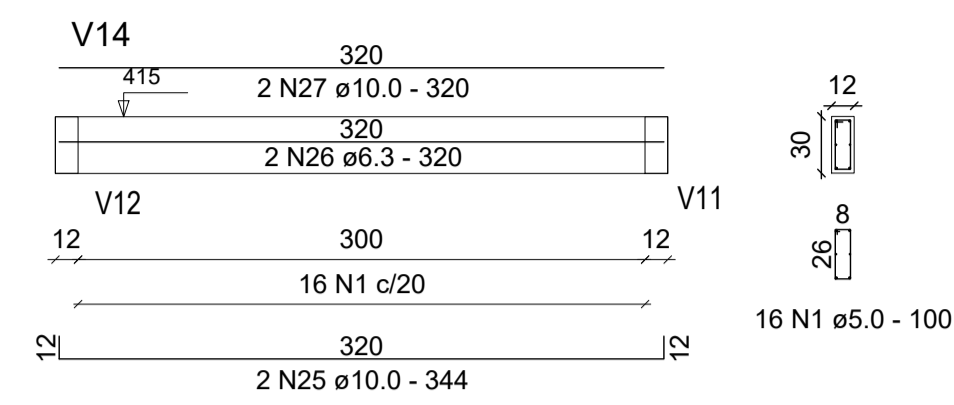


Resumo do aço						
AÇO	N	DIAM.	Q	UNIT. (cm)	C. TOTAL (cm)	Ocorr.
CA60	1	5,0	1779	80	142.320	20
CA50	2	10,0	16	675	10.800	4
	3	10,0	42	844	35.448	8
	4	10,0	8	882	7.056	2
	5	6,3	2	2.337	4.674	1
	7	10,0	4	1.200	4.800	1
	9	10,0	6	244	1.464	1
	10	6,3	6	220	1.320	1
	11	10,0	6	220	1.320	1
	12	10,0	6	488	2.928	1
	13	6,3	6	464	2.784	1
	14	10,0	6	464	2.784	1
	15	10,0	18	420	7.560	3
	17	6,3	8	2.168	17.344	2
	18	10,0	14	932	13.048	3
	19	10,0	2	432	864	1
	20	6,3	8	1.244	9.952	2
	21	10,0	6	864	5.184	1
	22	10,0	10	485	4.850	2
	23	6,3	2	926	1.852	1
	24	10,0	14	473	6.622	3
	25	10,0	2	344	688	1
	26	6,3	2	320	640	1
	27	10,0	2	320	640	1
	28	10,0	2	408	816	1
	29	6,3	2	384	768	1
	30	10,0	2	384	768	1
	31	10,0	6	506	3.036	2
	32	6,3	2	482	964	1
	33	10,0	2	482	964	1
	34	10,0	2	476	952	1
	35	6,3	2	452	904	1
	36	10,0	2	452	904	1
	37	10,0	4	524	2.096	1
	38	6,3	2	1.008	2.016	1
	39	10,0	8	514	4.112	2
	40	10,0	6	513	3.078	1
	41	6,3	6	954	5.724	1
	42	10,0	6	501	3.006	1
	43	10,0	4	958	3.832	1
	44	10,0	4	1.012	4.048	1
	45	6,3	4	1.926	7.704	1
	46	10,0	4	493	1.972	1
	47	10,0	2	806	1.612	1
	48	10,0	2	720	1.440	1
	49	6,3	2	1.482	2.964	1
	50	10,0	2	785	1.570	1
	51	10,0	2	708	1.416	1
	52	10,0	2	164	328	1
	53	6,3	2	140	280	1
	54	10,0	2	140	280	1
	55	10,0	2	224	448	1
	56	6,3	2	200	400	1
	57	10,0	2	200	400	1
	58	10,0	4	181	724	1
	59	6,3	4	157	628	1
	60	10,0	4	157	628	1
	61	10,0	4	232	928	1
	62	6,3	4	208	832	1
	63	10,0	4	208	832	1
Total					350.316	

Resumo do aço por Diâmetro			
AÇO	DIAM.	TOTAL(cm)	PESO (kg)
CA60	5,0	142.320	219,17
CA50	6,3	61.750	151,29
CA50	10,0	146.246	902,34
Total		350.316	1.272,80

Resumo do aço por Tipo	
AÇO	PESO (kg)
CA50	1.053,63
CA60	219,17
Total	1.272,80



ASSUNTO: PROJETO PARA CONSTRUÇÃO DA SEDE DO PODER LEGISLATIVO MUNICIPAL		PROJETO:	
RUA DEP. JOSÉ MACEDO, S/Nº - CENTRO - MOJÚÍ DOS CAMPOS - PARÁ			
REFERÊNCIA: PROJETO ESTRUTURAL			
DETALHES DAS VIGAS DO FORRO (2/2)		ESCALA: 1:25	DATA: ABRIL/28
PROJETO: ENG. CIVIL MARCOS RODRIGUES FREITAS - RNP - 150546695-9		ÁREA: 464,35m²	FOLHA:
RESP. TÉCNICO:			
PROPRIETÁRIO: CÂMARA MUNICIPAL DE MOJÚÍ DOS CAMPOS CNPJ: 17.434.855/00-23			