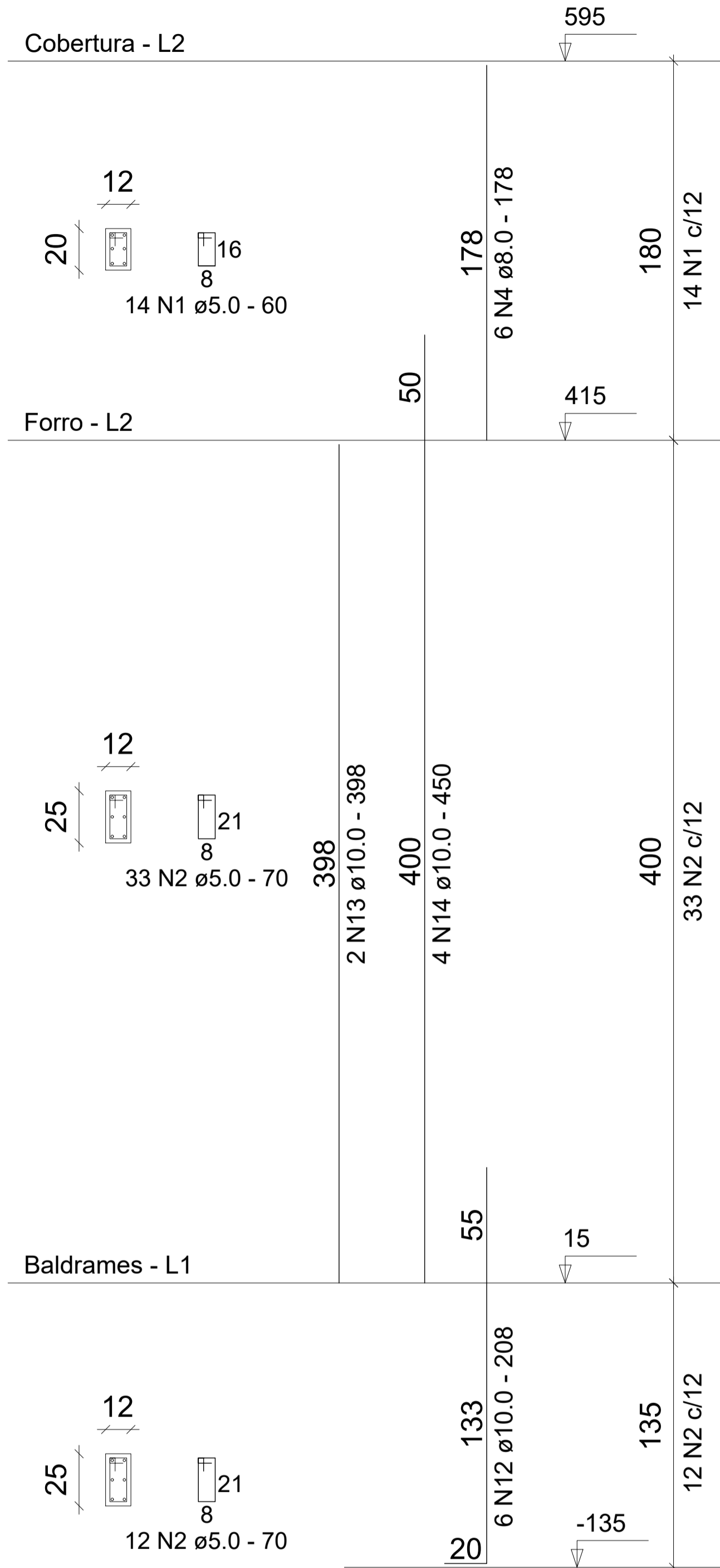
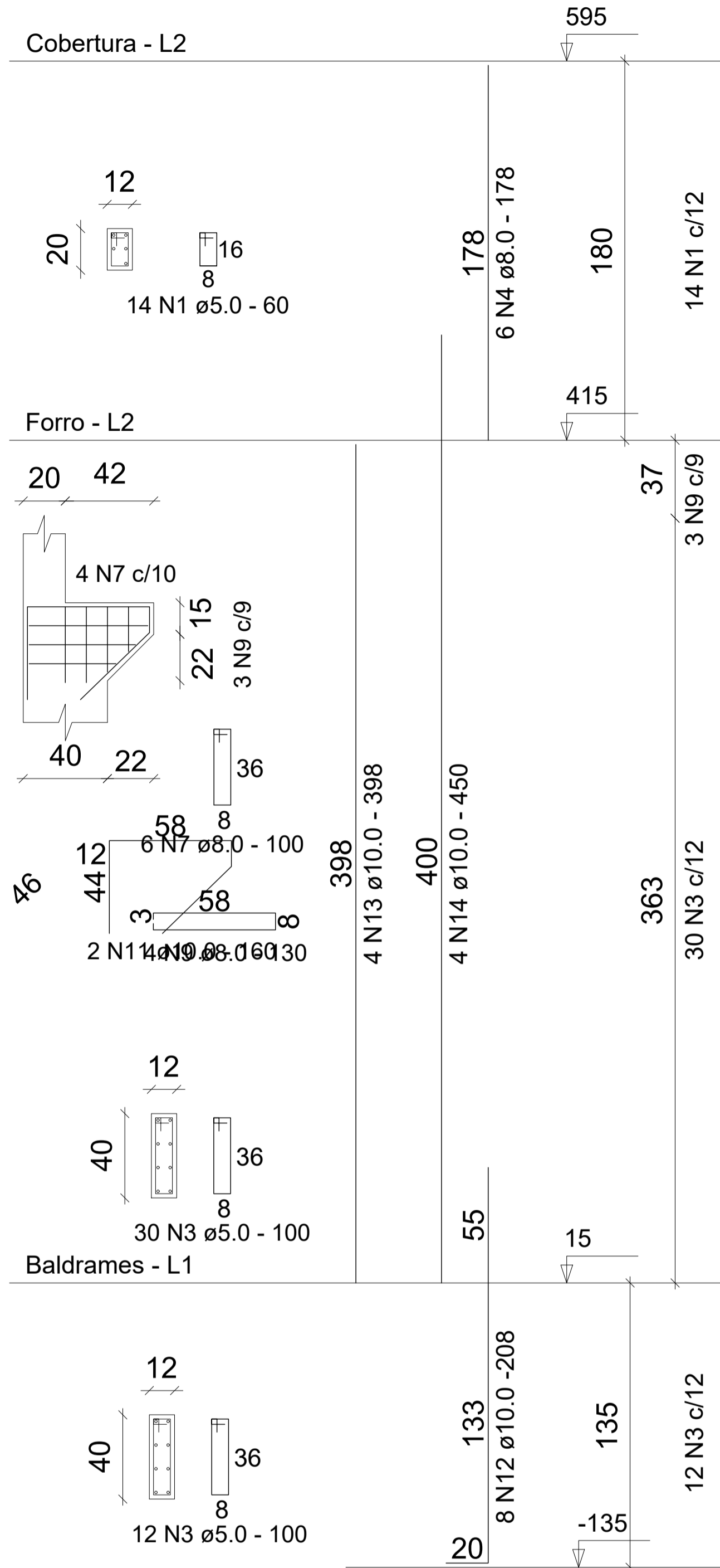


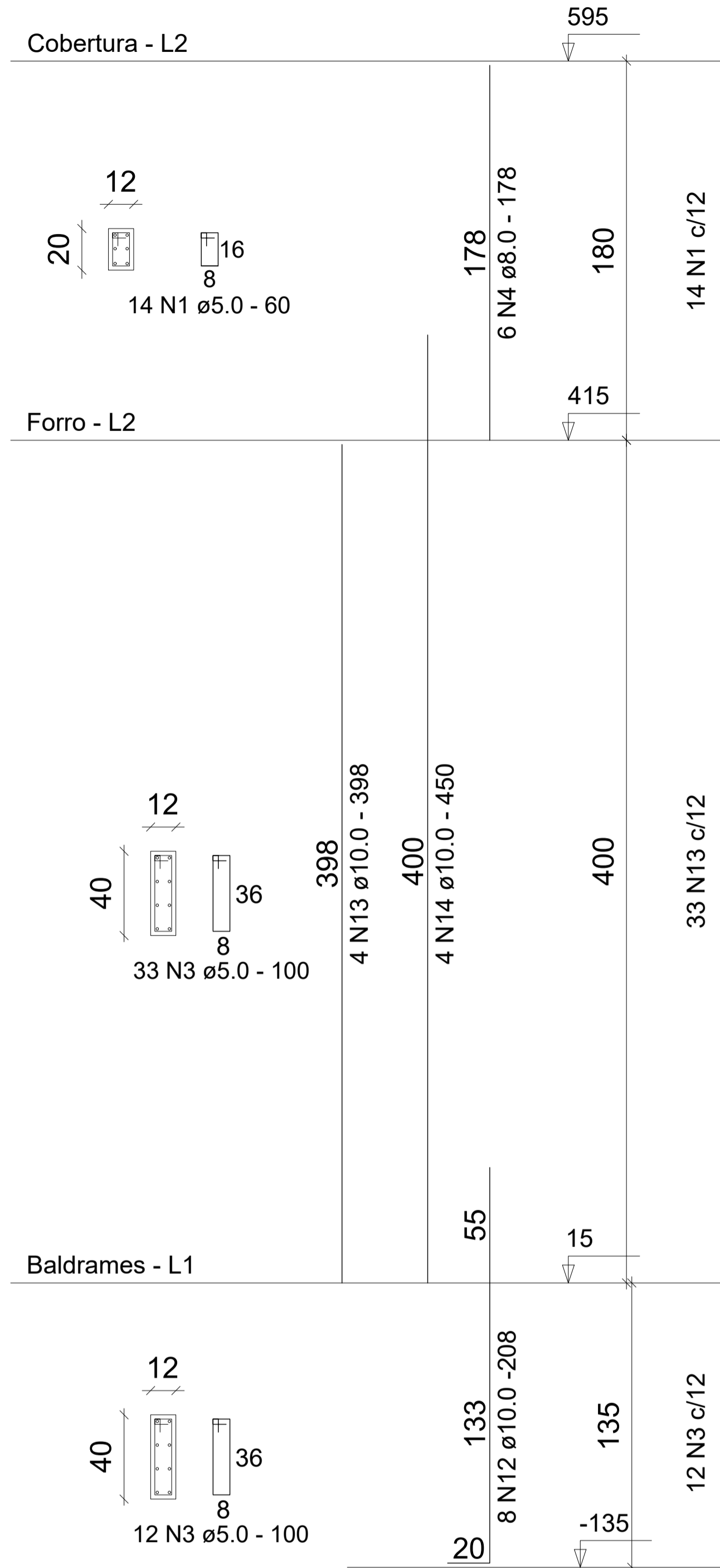
P1=P8 (x2)



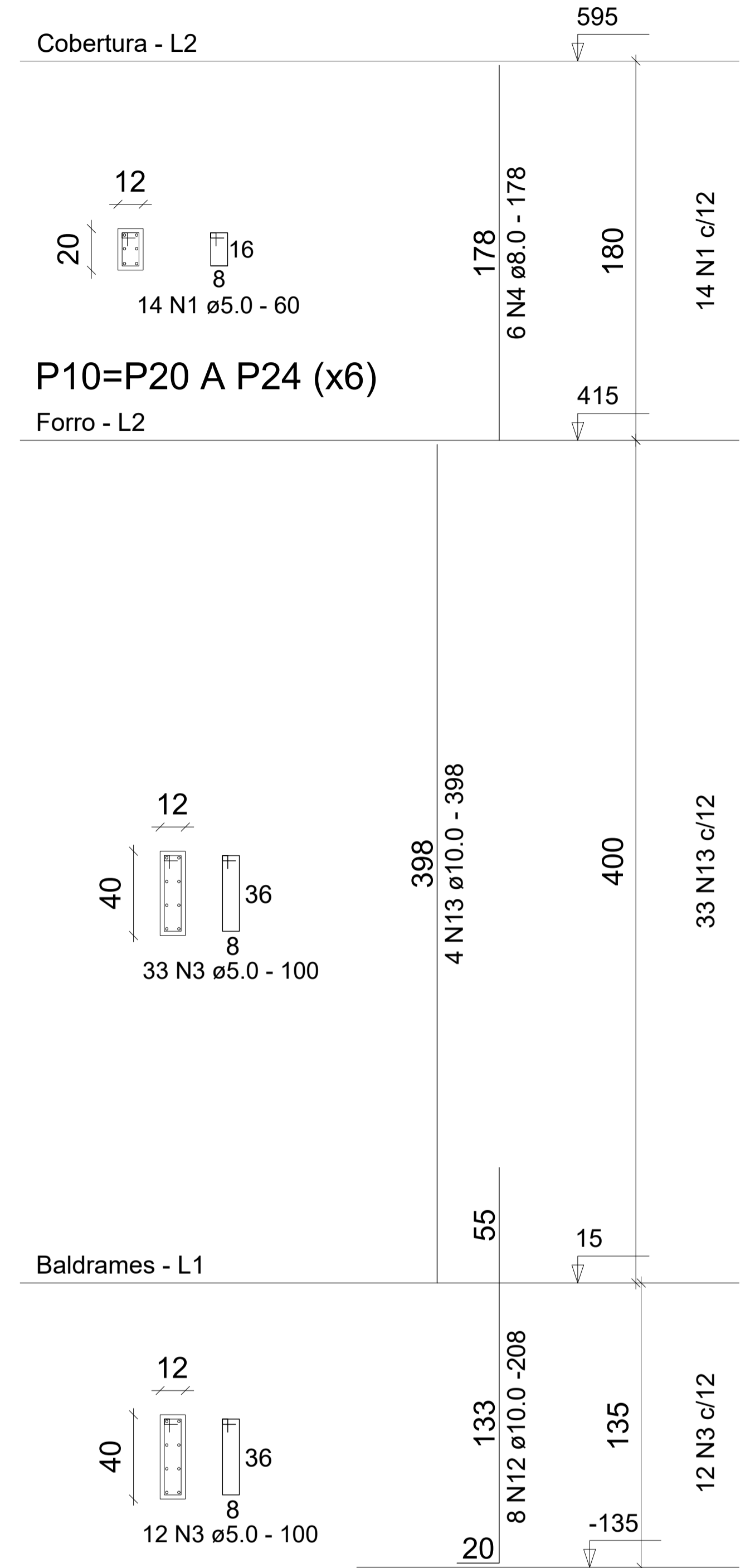
P2 A P7=P26 A P32 (x13)



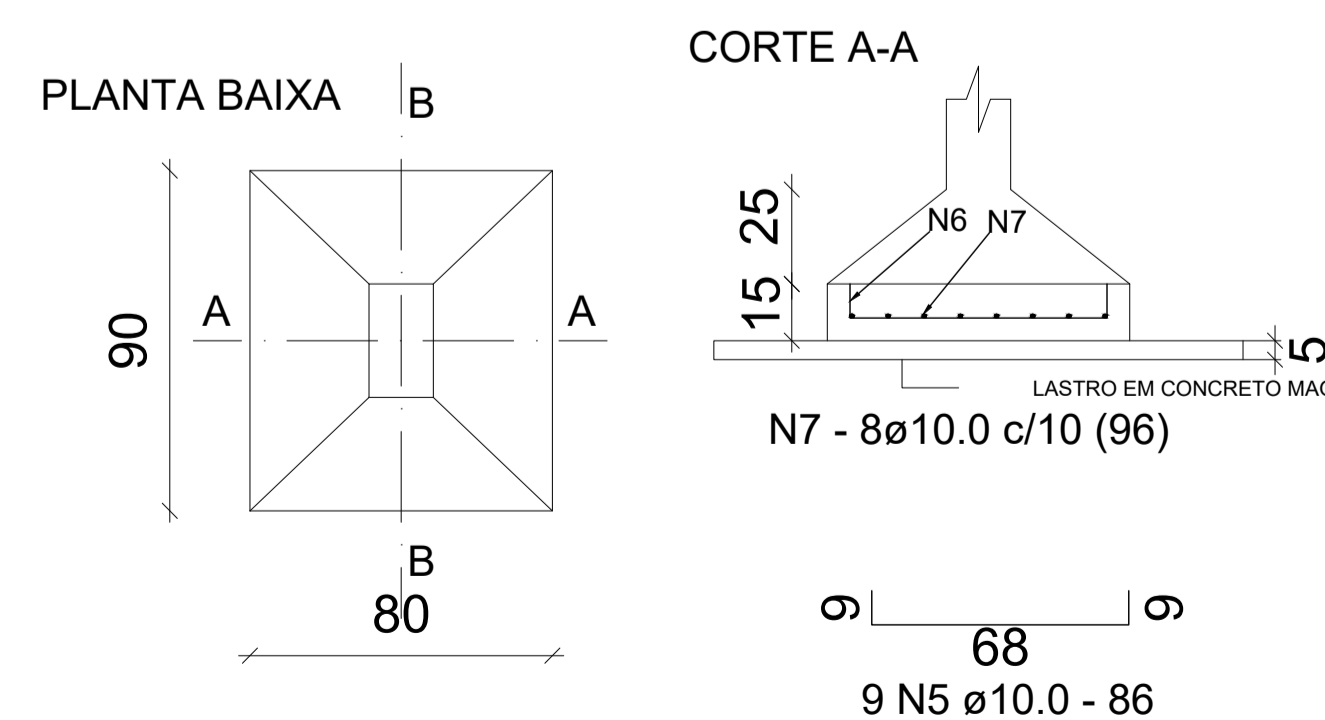
P9=P11 A P19=P25 (x11)



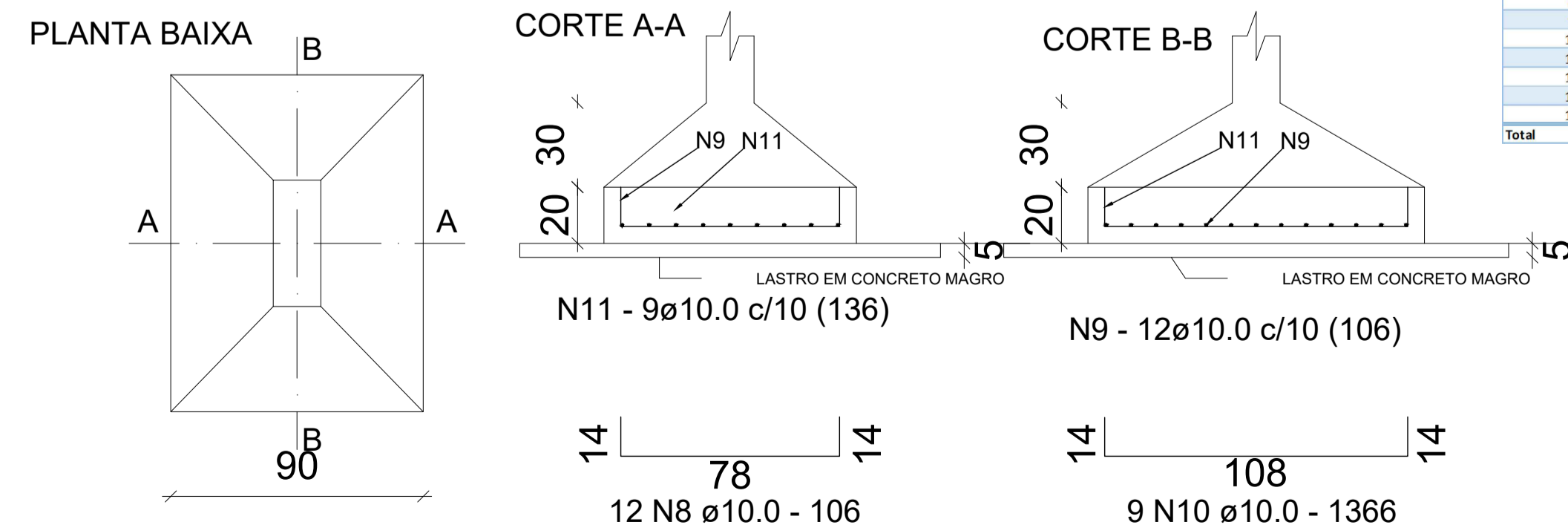
P8A (x1)



S1=S8 (x2)



S2 A S7=S9 A S32 (x30)



ACO	N	DIAM.	L	UNID.	C. TOTAL
CASO 1	5.0	378	60	23.680	
CASO 2	5.0	90	70	6.300	
3	5.0	1350	100	135.000	
4	8.0	162	178	28.836	
5	10.0	0	86	-	
6	10.0	18	96	1.728	
7	10.0	66	100	6.600	
8	10.0	0	106	-	
9	10.0	399	130	51.870	
10	10.0	0	136	-	
11	10.0	270	160	43.200	
12	10.0	278	208	57.824	
13	10.0	128	398	50.944	
14	10.0	324	450	45.900	
Total				460.782	

ACO	DIAM.	TOTAL(cm)	PESO (kg)
CASO 1	5.0	163.980	252.53
CASO 2	5.0	28.836	113.90
CASO 3	10.0	267.966	1.853.35
Total		460.782	2.019.78

ACO	PESO (kg)
CASO 1	1.767.25
CASO 2	252.53
Total	2.019.78

ASSUNTO:	PROJETO PARA CONSTRUÇÃO DA SEDE DO PODER LEGISLATIVO MUNICIPAL		
REFERÊNCIA:	PROJETO ESTRUTURAL		
DETALHES DAS SAPATAS E PILARES	ESCALA:	DATA:	ÁREA:
	1:50	ABRIL/28	464,35m²
PROJETO:	REVISÃO:	DATA:	FOLHA:
ENG. CIVIL MARCOS RODRIGUES FREITAS - RNP - 150546695-9			
PROPRIETÁRIO:	CÂMARA MUNICIPAL DE MOJÚ DOS CAMPOS CNPJ: 17.434.855/00-23		